



# Invasive Species Council Update & 2008 -2012 Plan

**MISC Sept 2008**

**Chris Dionigi  
National Invasive Species Council**



**Invasive species can be plants, animals, or microorganisms.**

- 1. species that are not native to the ecosystem under consideration.**
- 2. whose introduction causes or is likely to cause economic or environmental harm or harm to human health.**

(E.O. 13112)



Plants



Microbes



Animals





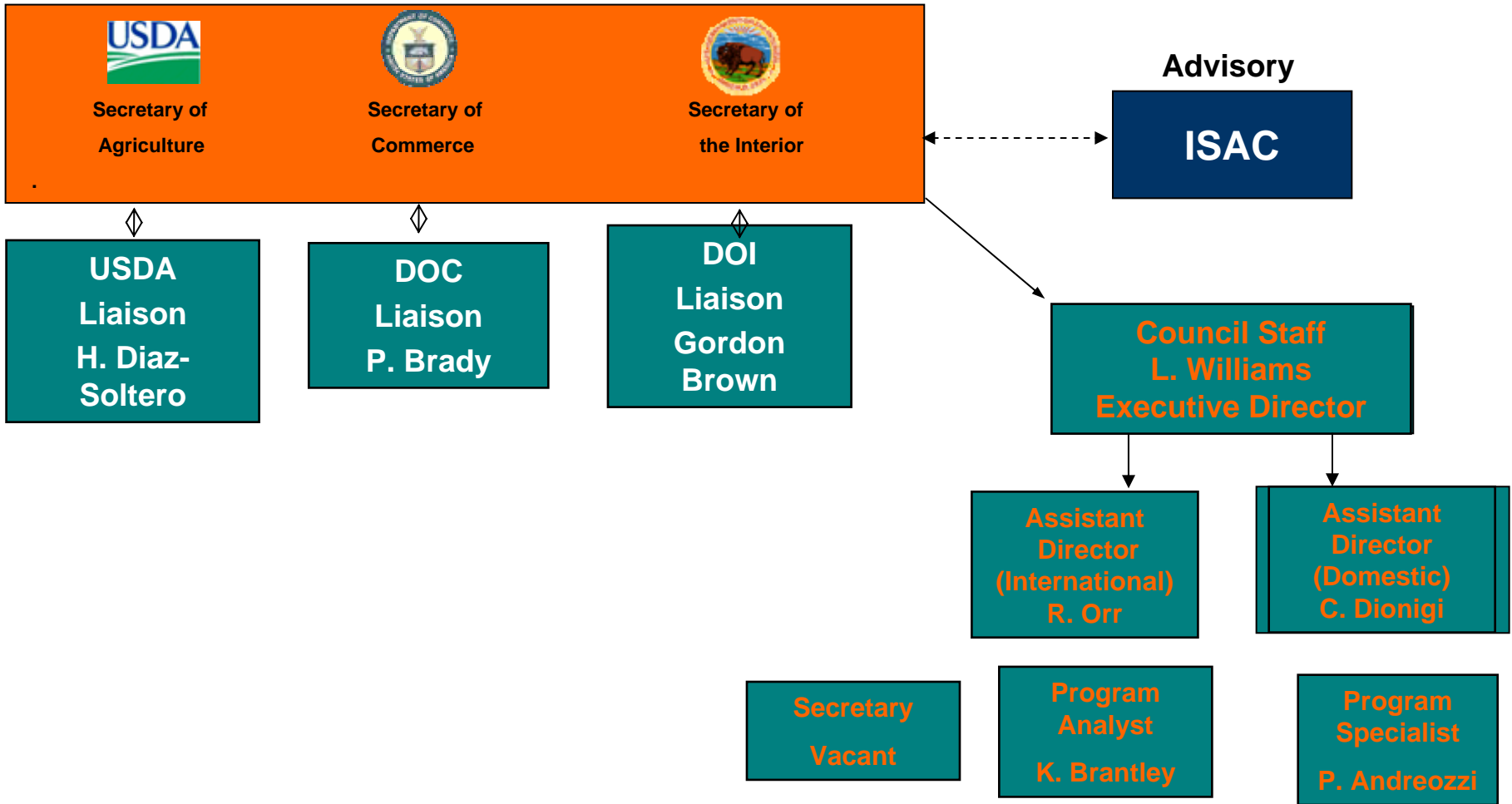
# **Invasive Species Definition Clarification and Guidance White Paper.**

**Definitions Subcommittee of  
the Invasive Species Advisory  
Committee**

**Approved April 27, 2006**



## NISC Office Outline





**NISC Staff has an extensive coordination responsibility.**

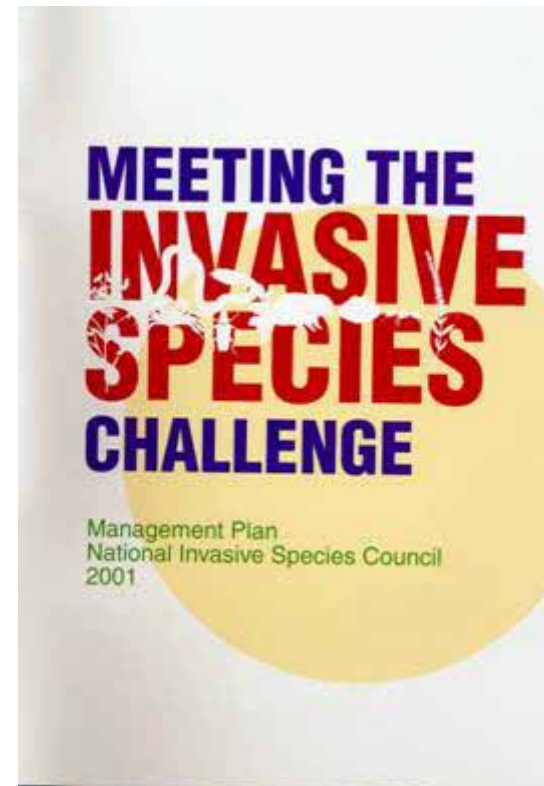
**35** Federal agencies & **40** Federal laws have some role/impact

About **390** Federal/State/private programs, **170** groups & **250** organizations

NISC Staff estimates Federal Invasive Species Spending at ca. **\$1.3 Billion/year**.



## NISC's Primary Coordination Tools = National Management Plans



**2001 Plan 170 identifiable actions**



**2008- 2012  
Plan Revision Completed August 1, 2008.**

**We have received 46 sets of  
comments from 60 individuals --  
For a total of about 145 pages of comments.**



**2008 – 2012 National Invasive  
Species Management Plan**



## **STRATEGIC GOALS**

**(Prevention, EDRR, CM, Restoration, and Organizational collaboration)**

### **OBJECTIVES (specific)**

**Implementation Tasks (5- Year)**

**Performance Elements (measures)**

**Leads & Participants**





**STRATEGIC GOAL (EDRR#2) Develop and enhance the capacity to identify report and effectively respond to newly discovered/localized invasive species**

**OBJECTIVE #1 : ENHANCE CURRENT MONITORING EFFORTS FOR EARLY DETECTION.**

**Implementation Task Enhance plant and animal pathogen detection methods.**

**Performance Elements Develop enhanced identification methods and supportive technologies for at least one group of pathogens.**

**Leads & Participants *ARS; USGS; DHS; HHS; DOD; EPA; APHIS; CSREES; FS.***

# THE NATIONAL INVASIVE SPECIES COUNCIL (NISC)



	1	2	3	4	5	6	7	8	9	10	11	12	13	14	15	16	17	18	19	20	21	22	23	24	25	26	27	28	29	30	31	32	33	34	35	36	37	38								
Strategic Goals	DOC_ALL	DOC_NOAA	DOI_ALL	DOI_BIA	DOI_BLM	DOI_BOR	DOI_FWS	DOI_NPS	DOI_USGS	USDA_ALL	USDA_APHIS	USDA_ARS	USDA_ARS_NAL	USDA_CSREES	USDA_ERS	USDA_FAS	USDA_FS	USDA_NRCS	DOD_ALL	DOD_COE	DHS_ALL	DHS_Coast Guard	DOS	DOT_ALL	DOT_OST AH	DOT_SLSDCAI	DOT_MARAD	EPA	HHS	NASA	NISC_ALL	NISC_STAFF	SMITHSONIAN	USAID	USTR	ANSTF	CEQ	OWFC	# LEADS	#PARTICIPATING	# of Performance Elements	Multiplier	Discreet	Ongoing		
Prevention Leads	0	4	0	0	0	0	4	1	2	0	8	0	0	0	0	2	0	0	0	0	0	1	0	0	0	0	0	0	0	0	2	0	0	0	0	1	0	0	0	0	25				11	8
Prevention Partic	1	3	1	0	1	0	6	1	4	0	6	12	0	3	1	0	6	4	0	2	2	1	4	1	1	1	1	7	0	0	3	1	0	2	8	0	0	0	0		83	19				
EDRR Leads	0	2	0	0	0	0	2	0	6	0	6	3	0	0	0	0	0	0	0	0	0	0	1	0	0	0	0	0	0	0	0	3	1	0	0	0	0	0	0	0	24				13	1
EDRR Partic	0	7	0	0	5	0	7	6	3	0	5	7	0	10	3	0	9	7	2	7	5	0	0	1	0	0	0	0	8	4	3	1	0	2	0	0	0	0	0		102	14				
Control Leads	0	0	0	0	3	0	1	0	3	0	1	1	0	1	0	0	3	0	0	3	0	0	0	0	0	0	0	0	0	0	0	6	0	0	0	0	0	0	0	0	22				14	1
Control Partic	0	1	0	0	7	2	10	9	3	0	11	8	0	3	2	0	7	12	3	11	0	0	1	1	0	0	0	0	0	2	0	0	0	0	0	0	0	0	0		93	15				
Restoration Leads	0	0	0	0	5	0	5	4	0	0	0	0	0	0	0	2	4	0	0	4	0	0	0	0	0	0	0	0	0	0	0	4	0	0	0	0	0	0	0	0	28				10	0
Restoration Partic	0	4	0	3	2	5	5	4	4	0	4	4	0	1	0	0	4	3	6	2	0	0	0	0	0	0	0	4	0	0	0	0	0	0	0	0	0	0	1		56	10				
Org Coll Leads	0	2	0	0	0	0	0	0	2	0	4	2	2	1	3	0	1	2	0	0	0	0	3	0	0	0	0	0	0	0	0	15	1	0	0	0	1	0	39				21	8		
Org Coll Partic	2	4	2	0	1	0	2	0	2	1	5	6	0	3	2	3	5	3	2	1	2	0	1	0	0	0	0	4	0	1	15	3	0	1	2	0	0		73	29						
LEADS	0	8	0	0	8	0	12	5	13	0	19	6	2	2	3	2	6	6	0	7	0	1	4	0	0	0	0	0	0	0	30	2	0	0	1	1	0	138				69	18			
PARTICIPATING	3	19	3	3	16	7	30	20	16	1	31	37	0	20	8	3	31	29	13	23	9	1	6	3	1	1	1	23	4	6	19	4	2	3	10	0	1	407			87		87			
TOTAL	3	27	3	3	24	7	42	25	29	1	50	43	2	22	11	5	37	35	13	30	9	2	10	3	1	1	1	23	4	6	19	34	4	3	10	1	1	1	545							
	30					133								206					41		11		10		6			23	4	6	53		4	3	10	1	1	1								



**2008 -2012 Plan has:**

- 5 Strategic Goals**
- 87 Performance Elements**
- 38 Agencies & Programs involved**
- 138 Lead roles identified**
- 407 Participant roles identified**
- 209 Actions called for**

**Commerce Leads or Participates in 30 Performance Elements.**

**Interior Leads or Participates 133 Performance Elements.**

**USDA Leads or Participates 206 Performance Elements.**

**NISC Staff Leads or Participates 53 Performance Elements.**



**PREVENTION:** Prevent the introduction of invasive species.

Screen intentionally introduced species.

Address high risk pathways of introduction.

Improve standards & guidelines.



## **EARLY DETECTION & RAPID RESPONSE:**

Find and stop new invasive species.

Enhance monitoring.

Make taxonomic information more available.

Develop EDRR tools.

Enhance planning.

Fund rapid response efforts.



## **CONTROL & MANAGEMENT:**

Stop the spread and minimize impacts.

Evaluate capabilities & identify gaps.

Reduce spread & harm.

Develop workforce competencies.

Enhance ecosystem recovery.



## **RESTORATION:**

Restore native species and habitats;  
rehabilitate high-value ecosystems and processes.

Include invasive species concerns in restoration projects.

Restore selected high-value areas.

Restore habitats at multiple scales.



## **ORGANIZATIONAL COLLABORATION:**

Maximize effectiveness & collaboration on invasive species issues.

Improve understanding of legal and regulatory tools.

Expand coordination.

Improve federal research.

Enhance policy & regulatory processes.  
Strengthen coordination.

Enhance outreach

Enhance data standards and quality.





**Invasive Plant Research  
and  
Partnerships with  
Ornamental Horticulture  
and  
Natural Resource Management  
Workshop Report**

Sponsored by:

U. S. National Arboretum  
Beltsville Agricultural Research Center  
The Nature Conservancy  
The American Nursery and Landscape  
Association  
National Invasive Species Council

**June 2008**



**General Consensus Points:**

**The importance of coordination and avoiding the introduction and spread of invasive plants.**

**Partnerships and communication among industry representatives, natural resource managers, and research administrators is critical.**



**Terminology can contribute to confusion.**

**Stakeholders, i.e., the horticulture industry and conservation groups, have not agreed upon standards (i.e., adequate levels of expression) for attributes such as “sterility,” and “non-invasiveness” in plant selections and cultivars. However, the relative effectiveness of the underlying genetic and/or physiological mechanisms that produce sterility in a cultivar provides a level of assurance of that cultivar’s anticipated performance in the field.**

**Decisions concerning codes of conduct, regulations, and planting recommendations should be based on “sound science.”**



**Systematics is a critical limiting factor.**

**A critical limiting factor is shared access to reliable information.**



**Solutions to complex problems requires sustained efforts at levels that are commensurate with the value of the resources at stake.**